

NISSAN PIXO



TWO GRADES

GRADE 1

VISIA

Standard

CD player with MP3 playback - Power steering - Front airbags - ABS - 14" steel wheels with covers - 4 cup holders (2 front & 2 rear) - Isofix child seat anchorage points - Parcel shelf - Tilt-adjustable steering wheel

GRADE 2

N-TEC

Additional to VISIA

14" alloy wheels - Manual air conditioning - Driver seat height adjustment - Side airbags - Remote central locking - 50/50 split folding rear seats - Front power windows - Body coloured door handles & mirrors - Front fog lamps

OPTIONS:

(Safety pack) Curtain airbag & ESP





SIX COLOURS

**LOW
CONSUMPTION**

UP TO 74.3 MPG*

**LOW
EMISSIONS**

DOWN TO JUST 103 G/KM



PAINT THE TOWN



ZAM: Onyx Black (P)



ZHJ: Shell White (P)



Z9T: Berry Red (S)



ZLZ: Indigo Grey (M)



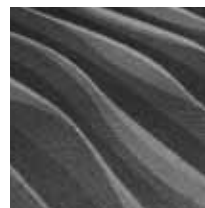
Z2S: Star Silver (M)



ZKY: Sky Blue (M)

M: Metallic / P: Pearlescent / S: Solid

TAKE A SEAT



Black and Grey Trim

MAKE IT YOURS



Ask for the Pixo accessories brochure

**Figures based on Extra-Urban cycle. Refer to technical insert for full details.*

STRAIGHT FORWARD

WAKE UP TO THE NISSAN PIXO. SIMPLE.



PIXO is elegantly designed whilst still offering great value: it is comfortable and easy to drive whilst still being fun, and full of features and functions at a very competitive price. Plus one environmentally friendly engine, two transmissions, two grades and six colours, you're sure to find an attractive combination.



GRADES

VISIA

5 DOOR 1.0 LITRE 5-SPEED MANUAL

COMFORT AND CONVENIENCE

- Power steering
- Tilt-adjustable steering wheel
- 12v socket (front)
- Front cabin light
- Vanity mirror

HEATING, VENTILATION AND VISIBILITY

- 2-speed front wiper with intermittent setting
- Rear wiper
- Manually adjustable door mirrors

INSTRUMENTATION

- Headlamp leveller

SEATING, TRIM AND STORAGE

- 2 front cup holders
- 2 rear door storage pockets
- 2 Rear headrests
- Parcel shelf

SAFETY

- Front airbags
- ABS with EBD and Brake assist
- ISOfix childseat anchorage points
- Child proof door locks



SECURITY

- Immobiliser

STYLING

- 14" Steel wheels with wheel covers

IN-CAR ENTERTAINMENT

- CD player with MP3 playback
- 2 Speakers

OPTIONS AT EXTRA COST

- Metallic or Pearlescent paint

n-tec SPECIAL EDITION

ADDITIONAL TO ACENTA GRADE

5 DOOR

1.0 LITRE 5-SPEED MANUAL OR 4-SPEED AUTO

COMFORT AND CONVENIENCE

- Front power windows
- Manual air conditioning
- Pollen filter

SEATING, TRIM AND STORAGE

- 50:50 split folding rear seats

SAFETY

- Side airbags
- Front fog lamps

SECURITY

- Central door locking
- Remote keyless entry
- Boot door opening lever

STYLING

- 14" alloy wheels
- Body coloured door mirrors
- Body coloured door handles

OPTIONS AT EXTRA COST

- Metallic or Pearlescent paint
- Safety Pack (Curtain Airbags & ESP)



PIXO			1.0 litre petrol engine	
MODEL				
Body type			5-door hatchback	
Available grades			Visia & n-tec	
Seating capacity		persons	4	
ENGINE				
Engine code			K10B	
No. of cylinders			3	
Valves per cylinder			4	
Engine capacity		cm³	996	
Bore x stroke		mm	73 x 79.4	
Max. engine power ¹⁾		kW(PS)/min-1	50(68)/6000	
Max. torque ¹⁾		Nm/min-1	90/3400	
Compression ratio			11	
Fuel type			Unleaded petrol RON 95	
Ignition system / Intake system (Diesel)			Multi point injection	
Fuel supply			Electronic	
Emission control system			3 way catalyst	
Emissions Level			EU5	
DRIVE TRAIN				
Clutch type			Mechanical	Hydraulic
Transmission			5 MT	4AT
Gear ratio	1st		3.454	2.875
	2nd		1.904	1.568
	3rd		1.280	1.000
	4th		0.966	0.697
	5th		0.815	-
	Reverse		3.272	2.300
Final drive ratio			3.650	4.375
Driven wheels			Front	
CHASSIS				
Suspension	front		Mc Pherson strut	
	rear		Isolated trailing link with coil spring	
Steering			Electric power assisted	
Braking system			Disc front, drum rear, with ABS, EBD and brake assist function	
Wheel size (option)			14x4	
Tyre size (option)			155/65R14	

			1.0 litre petrol engine	
MODEL				
Body type			5-door hatchback	
Available grades			Visia & n-tec	
Seating capacity		persons	4	
WEIGHTS & DIMENSIONS				
Kerb weight ²⁾		kg	885	910
Gross Vehicle Weight		kg	1250	
Max. pay load ²⁾		kg	365	340
Max. axle weight front		kg	700	
Max. axle weight rear		kg	650	
Max. trailer weight		braked ⁴⁾	kg	200
		unbraked ⁴⁾	kg	100
Max. vert. load on coupling point		kg	50	
Max. roof load		kg	35	
Overall length		mm	3565	
Overall width		mm	1600	
Overall height		mm	1470	
Wheelbase		mm	2360	
Track front		mm	1405	
rear		mm	1400	
Luggage capacity		(option) (VDA)	l	129
		max. with folded seats (VDA)	l	367
Cd			0.3	
Fuel tank capacity [N]		l	35	
PERFORMANCE				
Fuel consumption 3)				
Urban cycle		mpg (l/100 km)	51.4 (5.5)	42.2 (6.7)
Extra-urban		mpg (l/100 km)	74.3 (3.8)	62.8 (4.5)
Combined		mpg (l/100 km)	64.2 (4.4)	54.3 (5.2)
CO2 mass emission (Combined)		g/km	103	122
Max. speed		mph (km/h)	96 (155)	93 (150)
Acceleration 0 - 62 mph		sec	14	17
Min. turning circle (kerb to kerb)		m	4.5	

1) In accordance with 1999/99/EC.
2) Figures in accordance with EC Directive. Kerb weight condition is without driver and including coolant, oils, fuel, spare wheel and tools. Pay load will be reduced depending on the options and/or accessories installed.
3) In accordance with 1999/100/EC. (Optional equipment, maintenance, driving behaviour, road and weather conditions may affect the official results)
4) Figures shown are with driver + 4 passengers and luggages and max. kerb weight.



PIXO - Prices Effective from 1st April 11 - 30th June 11

Doorplan	Grade	Engine	Transmission	Basic Price	VAT	Total Retail Price	On The Road Price
5 door	VISIA	1.0i 12V	5 manual	5,783.33	1,156.67	6,940	6,995
	n-tec	1.0i 12V	5 manual	6,616.67	1,323.33	7,940	7,995
			4 auto	7,366.67	1,473.33	8,840	8,895

Basic and Total Retail includes delivery to the Dealership and number plates. On the Road Price includes 12 months Government Vehicle Excise Duty (determined by CO₂ emissions figure and fuel type- see back page for details) and £55 Government First Registration Fee.

PIXO OPTIONS - Prices Effective from 1st April 11 - 30th June 11

	VISIA	n-tec	Basic	VAT	Total
Metallic, pearlescent or black paint	○	○	333.33	66.67	400
Safety Pack (ESP and Curtain airbags)		○	375	75	450
Delivery Pack (Luxury velour textile mats, spare bulb and fuse kit, Nissan care pack*)	□	□	33.33	6.67	40
Rear park sensors	□	□	304.17	60.83	365
Front park sensors	□	□	304.17	60.83	365
14" Alloy wheels x4*	□	●	347.52	69.52	417
Luxury velour textile mats	□	□	30.83	6.17	37
Striping set (black or white)	□	□	113.33	22.67	136
Body side mouldings	□	□	95.83	19.17	115
Trunkliner	□	□	35.00	7.00	42
Load carriers (steel)	□	□	127.50	25.50	153
Clarion audio upgrade (includes Bluetooth and iPod connectivity)	□	□	166.67	33.33	200
Front door speakers	□	□	83.33	16.67	100
Front and rear door speakers	□	□	145.83	29.17	175

Optional - ○ Standard - ● Optional Dealer Fit - □

*Price excludes tyres

* Nissan care pack includes: Nissan branded toggle bag, large car wash sponge, wash 'N' wax sachet, screen bug shifter sponge, chamoix de-mister pad, screenwash sachet, pocket torch (including batteries)

Dealer fit option prices include fitting but are only a guide. Please check with your local Nissan dealer for exact prices.

INTRODUCING OUR COMMITMENT TO YOU

You care about your Nissan so Nissan will care for you. That's why we'll make the following commitment:

YOU care about staying on the road when your Nissan is in for service or repair.

YOU care about quality enough to have your Nissan serviced at a Nissan dealership.

YOU care about getting the best value for money when it comes to service and repair.

YOU care about having your problems resolved quickly.

YOU care about getting the right Nissan model, engine & gear box to test drive.

NISSAN will keep you mobile free of charge.

NISSAN says thanks by giving you continuous RAC roadside assistance for free.

NISSAN will price match like for like competitor written quotes within 10 miles of your local dealer.

NISSAN will propose how to resolve any problem within 2 working days.

NISSAN will guarantee that's what you'll get when you pre-book your test drive either online or through our customer service centre.

Find out more at nissan.co.uk/care

YOU + NISSAN

CARE



We see SHIFT_ as an invitation. To challenge whatever feels too familiar. To open your mind to the unfamiliar. To ask the questions no one else is asking. And to find answers no one else can. At Nissan, we do this every day. And it shapes everything we do. The result is a line-up of vehicles that represents a pure, uncompromising shift from the ordinary.

Visit our website at:

www.nissan.co.uk



SHIFT_ the way you move

Dealer stamp:

Every effort has been made to ensure that the content of this publication is correct at the time of going to press (February 2011). This brochure has been produced featuring prototype vehicles exhibited at motor shows. In accordance with the company's policy of continuously improving its products, Nissan International reserves the right to change at any time the specification and the vehicles described and shown in this publication. Nissan dealers will be informed of any such modifications as quickly as possible. Please check with your local Nissan dealer to receive the most up-to-date information. Because of the limitations of the printing processes used, the colours shown in this brochure may differ slightly from the actual colours of the paint and interior trim materials used. All rights reserved. Reproduction in whole or part of this brochure without the written permission of Nissan International is forbidden.

This brochure is made from chlorinefree paper. PIXO – GEA – 02/2011 – Printed in E.U.
Created by NEW BBDO, France – Tel.: +33 1 40 62 37 37 and produced by E-GRAPHICS\FRANCE. France – Tel.: +33 1 49 09 25 35 – Part number 99999-54008